



THE SOUTHERN MEDICAL ASSOCIATION

-

Ensuring a legacy of quality patient care through science,
leadership, and continuing medical education.



THE LEGACY THAT YOU LEAVE



A Decrease in Access to Quality Health Care A Call To Action

The healthcare system in the United States continues to face a growing crisis – a shortage of physicians and healthcare professionals, increased life expectancy, lack of access to care, and increases in chronic diseases.

At the center of this crisis is burnout. The physical, emotional, and mental exhaustion caused by chronic stress, overwhelming workload, and increasing political regulations have resulted in reduced job satisfaction and overall well-being for medical professionals across the healthcare landscape.

*At the current rate, the physician deficit in the US Southern region will exceed 110,000 by the year 2030.



FOR OUR FAMILY



SMArt Solutions

Leadership Development

Physician shortages require a team-based approach to care. Now more than ever, physicians must be prepared to lead teams of healthcare professionals to ensure patients have access and receive quality care. These teams must train together, work together, and build mutual trust and respect so that quality health care is accessible and attainable to all.

Team-Based Continuing Medical Education

For more than 40 years, SMA has been accredited by the Accreditation Council for Continuing Medical Education to provide AMA PRA Category 1 credit for medical education that is focused on team building and improving health outcomes.

Focus on the Future

Since its inception, SMA has focused on engaging Medical Students, Residents, and Fellows through scholarly activities, presentation competitions, awards, and scholarships. As these Physicians-in-Training transition throughout their careers, SMA serves as an invaluable resource for education, collaboration among peers and colleagues, as well as mentoring and networking.

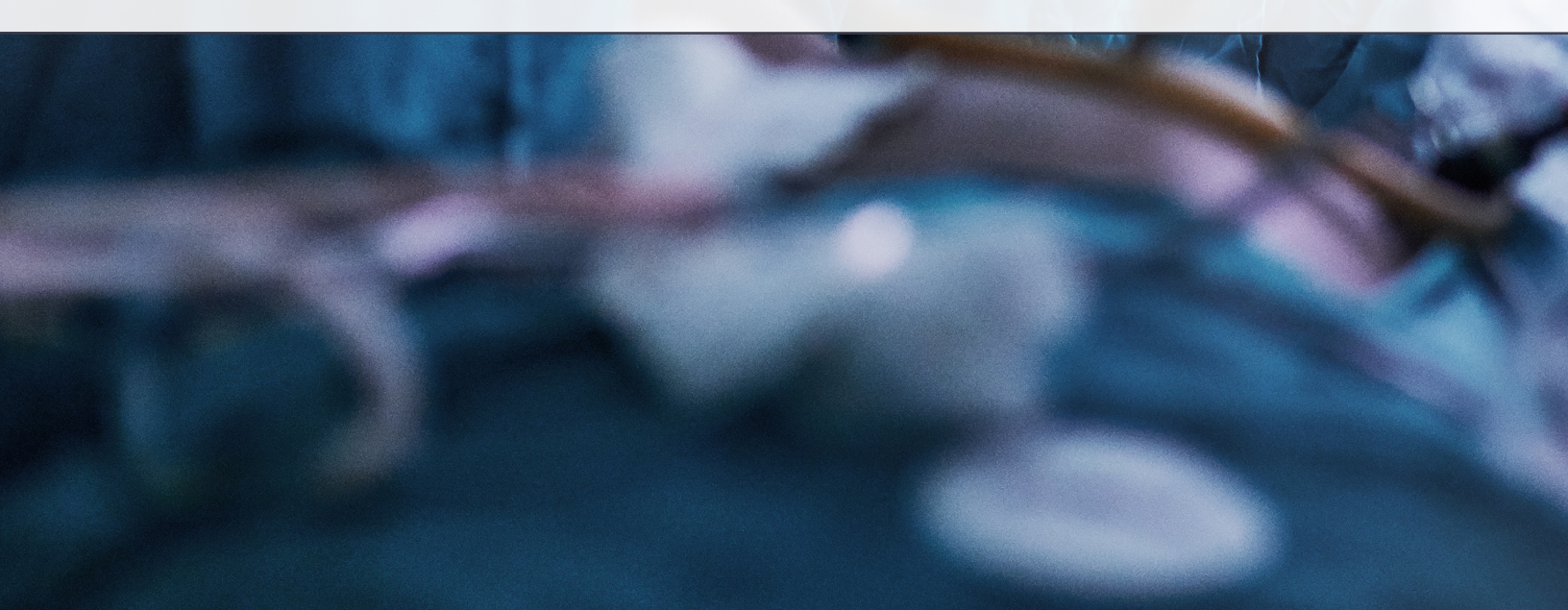
A Family of Medicine

Health Professionals need a place to call home, a place where they feel accepted and valued. Oftentimes associations can feel overwhelming, difficult to navigate, and at times competitive. “Southern” is welcoming, hospitable, engaging, and collegial. SMA is a home where we place the good of the patient first. SMA provides a medical home where teaching and learning from each other’s experiences are a priority.

Health Professionals across the continuum of care and disciplines are all welcome in the SMA Family of Medicine.



ENSURES BETTER PATIENT CARE





Trusted and Qualified

Since 1906, SMA has been committed to improving the quality of patient care through peer-reviewed science, multidisciplinary interprofessional/team-based education, mentoring, and events designed to foster collaboration, networking, and collegiality.

SMA is an association that advocates for health and the betterment of our population and believes in utilizing resources toward initiatives that are educational, scholarly, and team-building.

Since 1908, the Southern Medical Association has published multispecialty, interprofessional peer-reviewed science through the Association's official medical journal, *The Southern Medical Journal*.

SMA has been accredited by the Accreditation Council for Continuing Medical Education to provide AMA PRA Category 1 credit for more than 40 years.

Since its inception, SMA has been dedicated to supporting Medical Students, Residents, and Fellows through scholarly activities, presentation competitions, awards, and scholarships with the desire to help support the future of medicine.



FOR **YOUR** FAMILY.



Create Your Legacy Within the Family of Medicine

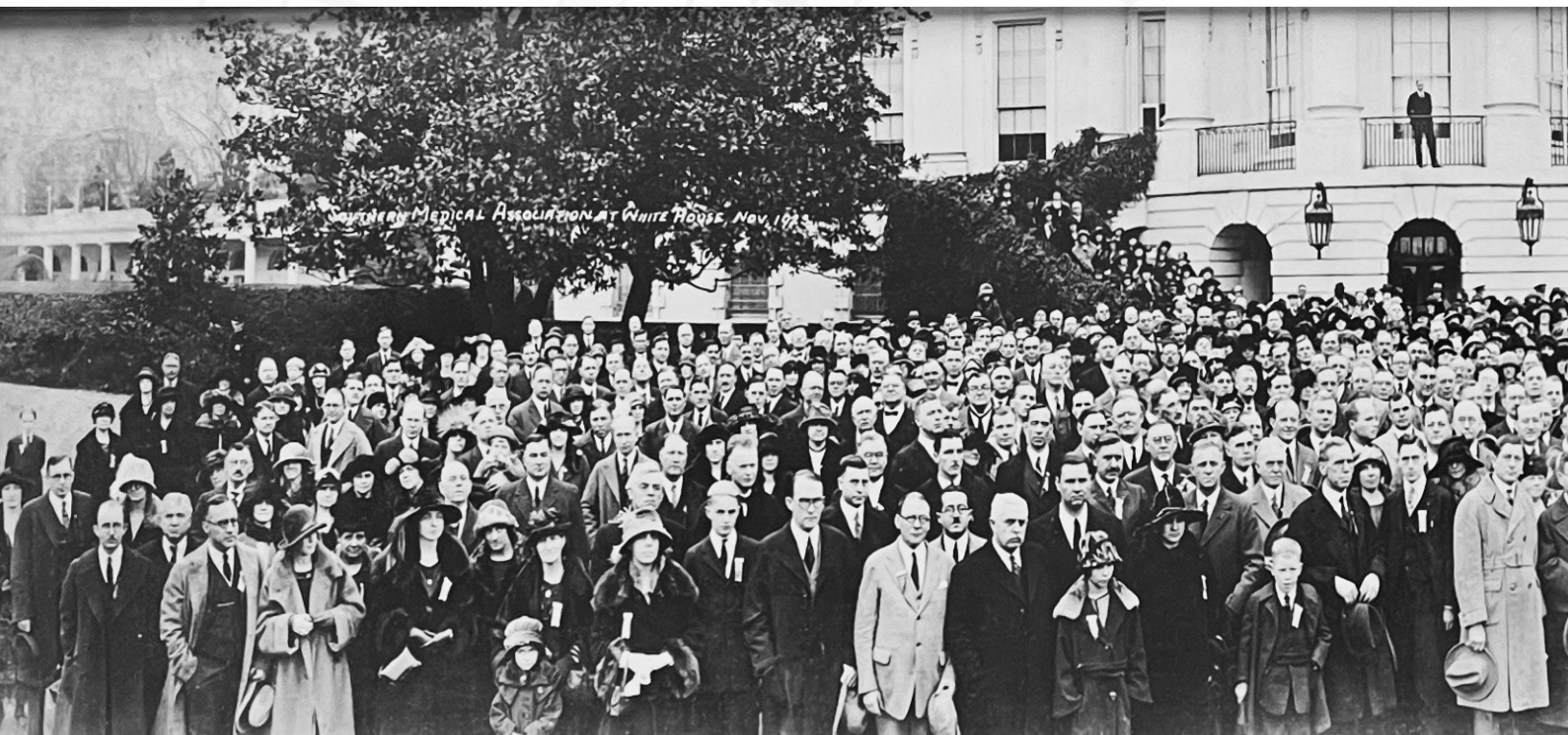
-

Become a member of the SMA Family of Medicine and foster the Association's long-standing tradition of education, scientific research, and collegiality.

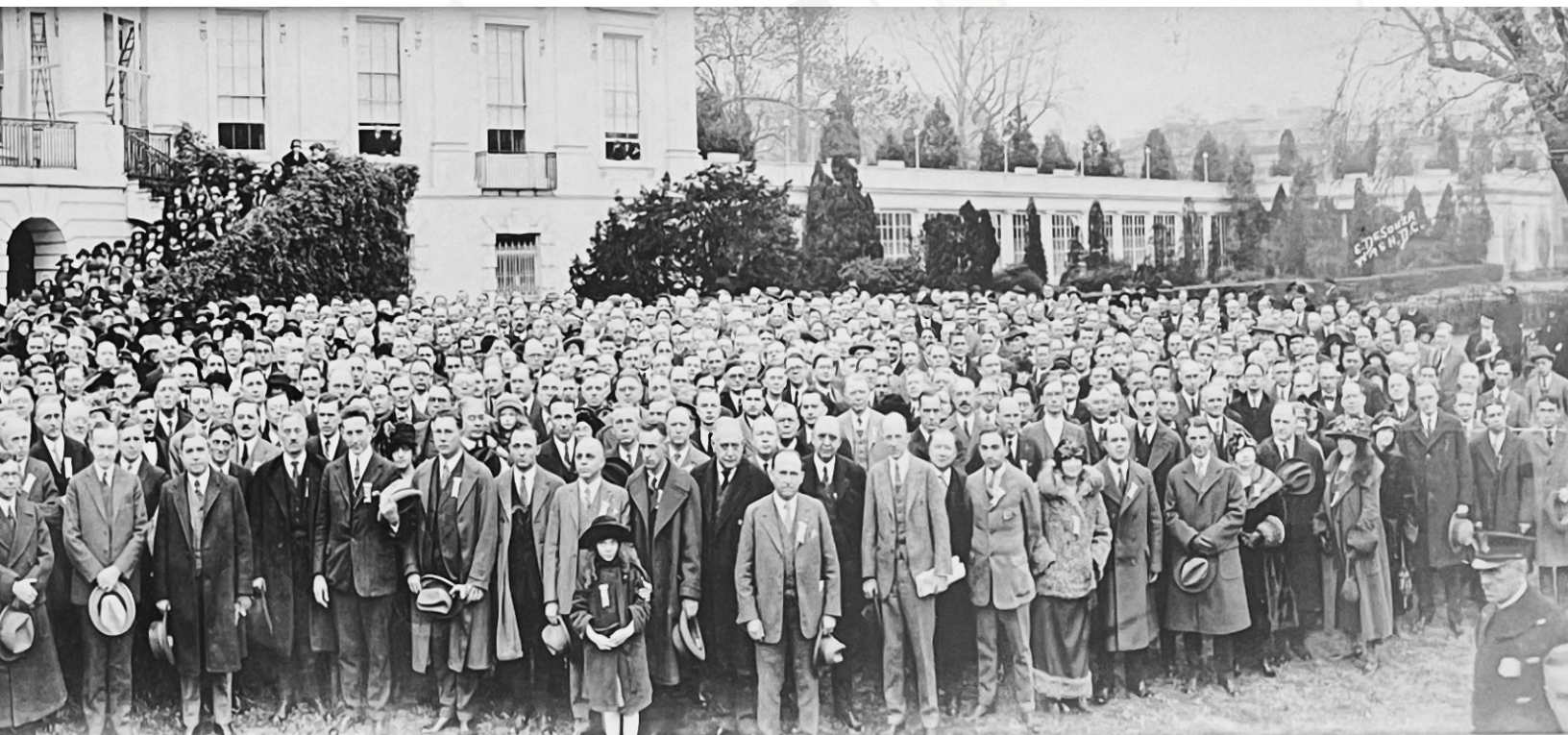
Support our mission by endowing a portion of the Southern Medical Legacy Program.

Your donation is 100% tax deductible and will be used to endow the named program that is most important and significant to you.

A **LEGACY**
OF LEADERSHIP



SINCE 1906



THE SOUTHERN MEDICAL ASSOCIATION
Washington, DC
1923



WHAT WILL **YOUR**
LEGACY BE?



MedicalLegacy.org

SMA Endowments

Annual Scientific Assembly

Live Medical Conference

SMA's premier live medical conference is an annual event that includes an extensive agenda addressing topics from up-to-date methods of preventative medicine to more complex subject matter and the latest research studies. Every presentation is peer-reviewed by SMA's Planning Committee of highly respected clinicians, ensuring that all faculty content complies with or exceeds the ACCME's educational standards. This is an in-depth, multi-day conference during which clinicians and healthcare professionals of varied backgrounds and specialties convene in order to gain knowledge, provide improved care for patients, and better understand other care providers across an ever-changing healthcare landscape.

Endowment Cost: \$4,000,000

The Southern Medical Journal

Published exclusively online, the *Southern Medical Journal (SMJ)* is the official, peer-reviewed, PubMed-indexed journal of the Southern Medical Association. Published since 1908 and containing an archive of more than 46,000 articles, the *SMJ* has a multidisciplinary and interprofessional focus that covers a broad range of topics relevant to physicians and other healthcare specialists.

Endowment Cost: \$2,700,000

Physicians-in-Training Leadership Conference

Dedicated to the future of medicine by developing tomorrow's leaders of medicine, SMA's Physicians-in-Training Leadership Conference provides opportunities for medical students, residents, and fellows to: present their research through abstract competitions for cash awards, participate in hands-on workshops and interactive activities designed for interprofessional learning, fulfill Accreditation Council for Graduate Medical Education requirements related to participation in scholarly activities, and network with colleagues from other medical schools and residency programs.

Endowment Cost: \$800,000

Virtual Abstract Competition

Southern Medical Association's Virtual Abstract Competition offers medical students, residents, and fellows from all over the country an opportunity to compete for an opportunity to present their projects at the Association's annual conference. This is a preliminary competition with the top 10 oral presentations and the top 10 poster presentations from this virtual event advancing and presenting in person at SMA's Annual Scientific Assembly.

Endowment Cost: \$500,000

SMArt Bowl Competition

This in-person medical trivia competition taking place during SMA's Annual Scientific Assembly brings together medical students and residents to compete for monetary prizes, socialize with peers, and continue SMA's tradition of medical excellence. This evening offers the chance to take home the SMA PIT Medical Excellence Award.

Endowment Cost: \$500,000

Travel Grants

SMA travel grants aim to empower the next generation of healthcare professionals, recognizing the invaluable role that continuous learning and networking play in their professional development.

A significant aspect of medical education requires that physicians-in-training attend and present at scholarly events. This often involves presenting research to peers, physicians, and mentors at conferences such as SMA's Physicians-in-Training Leadership Conference or the Association's Annual Scientific Assembly. Travel grants provide assistance to help defray costs associated with attending and participating in these events.

Top 20 Travel Grant

Provides a travel grant of \$5000 (\$250 each) to the top 20 Virtual Abstract Competition Winners so they can travel to, and compete live at SMA's Annual Scientific Assembly.

Endowment Cost: \$125,000

PIT Leadership Travel Grant

Provide \$2000 in financial aid for PIT Leaders to travel for any SMA Business. Leaders must apply for a grant. Grants must be approved by a majority vote of the PIT Committee. There are 2 of these available.

Endowment Cost: \$50,000

Scholarships

Scholarships are opportunities to invest in the future of health and are awarded each year at SMA's Annual Scientific Assembly. A selection committee, composed of senior leadership including PIT representation, under the guidance of the SMA Board of Directors determines the qualifications of all applicants/recipients. Scholarships are awarded to students who are enrolled in an appropriate health professions school that is accredited by the corresponding accreditation body.

\$20,000 Named Scholarship

A \$20,000 scholarship given in your name to a deserving student.

\$500,000

\$10,000 Named Scholarship

A \$10,000 scholarship given in your name to a deserving student.

\$250,000

\$5,000 Named Scholarship

A \$5,000 scholarship given in your name to a deserving student.

\$125,000

\$2,000 Named Scholarship

A \$2,000 scholarship given in your name to a deserving student.

\$50,000

Donor Levels

Legacy Society (\$1,000,000 or more)

- Your name is enshrined on SMA.org as a member of SMA's Legacy Society.
- Lifetime complimentary registration to the Annual Scientific Assembly.
- Private Presidential Reception during Annual Scientific Assembly.
- 1 Complimentary table at SMA's Annual Gala Event.
- Lifetime complimentary membership.

Founders' Club (\$500,000- \$999,999)

- Your name is enshrined on SMA.org as a member of SMA's Founders' Club.
- Lifetime complimentary registration to the Annual Scientific Assembly.
- Private Presidential Reception during Annual Scientific Assembly.
- 4 Complimentary tickets to SMA's Annual Gala Event.
- Lifetime complimentary membership.

President's Circle (\$100,000 - \$499,999)

- Your name is enshrined on SMA.org as a member of SMA's Founders' Club.
- Lifetime complimentary registration to the Annual Scientific Assembly.
- Private Presidential Reception during Annual Scientific Assembly.
- 2 Complimentary tickets to SMA's Annual Gala Event.
- Lifetime complimentary membership.

Benefactor (\$50,000-\$99,999)

Your name is enshrined on SMA.org as a Benefactor of SMA. Lifetime complimentary registration to the Annual Scientific Assembly. Lifetime complimentary membership.

Advocate (\$10,000-\$49,999)

Your name is enshrined on SMA.org as an Advocate of SMA. Lifetime complimentary registration to the Annual Scientific Assembly.

Society of 1906 Member (\$2500-\$9,999)

Generates a one time (50/50) 1906 Legacy Scholarship in your name to a deserving student.

Society of 1924 Member (\$1,500-\$2499)

Generates a one time (50/50) 1906 Legacy Scholarship in your name to a deserving student.

Donor \$500-\$1499

Your name enshrined on SMA.org as a Donor and an SMA Legacy TShirt.

Patron \$100-\$499.

Your name enshrined on SMA.org as a Patron and an SMA Legacy TShirt.